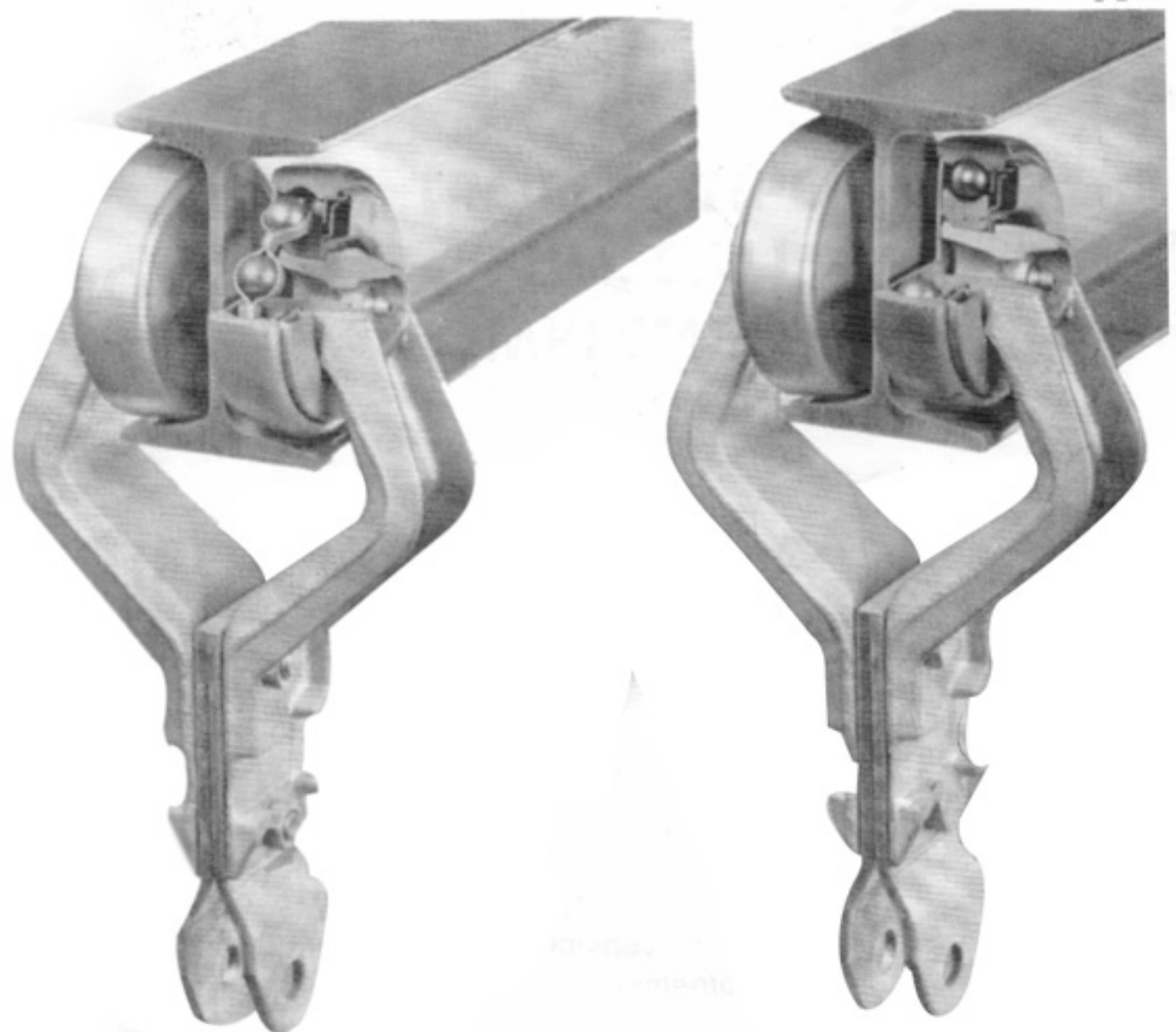


MACLEU

TRANSPORTADORES AÉREOS E COMPONENTES

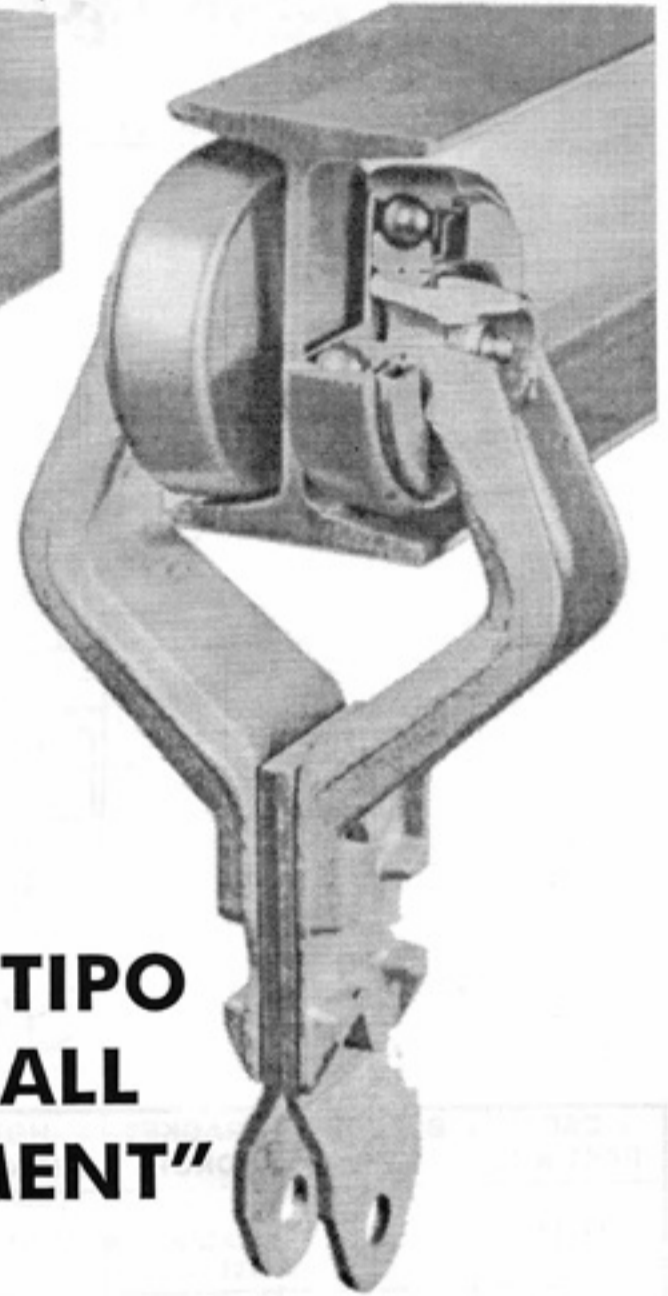


X348 - X458 - X678

TROLLEY TIPO "RETAINER"



TROLLEY TIPO "FULL BALL COMPLEMENT"



UM TIPO PARA CADA APLICAÇÃO

TROLLEY TIPO "RETAINER"

O trolley tipo "retainer" foi desenvolvido para condições de baixo atrito em ambiente de baixa contaminação tipicamente encontrada em aplicações de transporte puro e simples, podendo também ser usado em máquinas lavadoras de contaminação média, desde que seja trolleys do tipo blindado e em temperatura abaixo de 160° graus.

A principal vantagem deste trolley é seu baixo coeficiente de atrito com conseqüente maior vida útil exigindo menor potência de motorização.

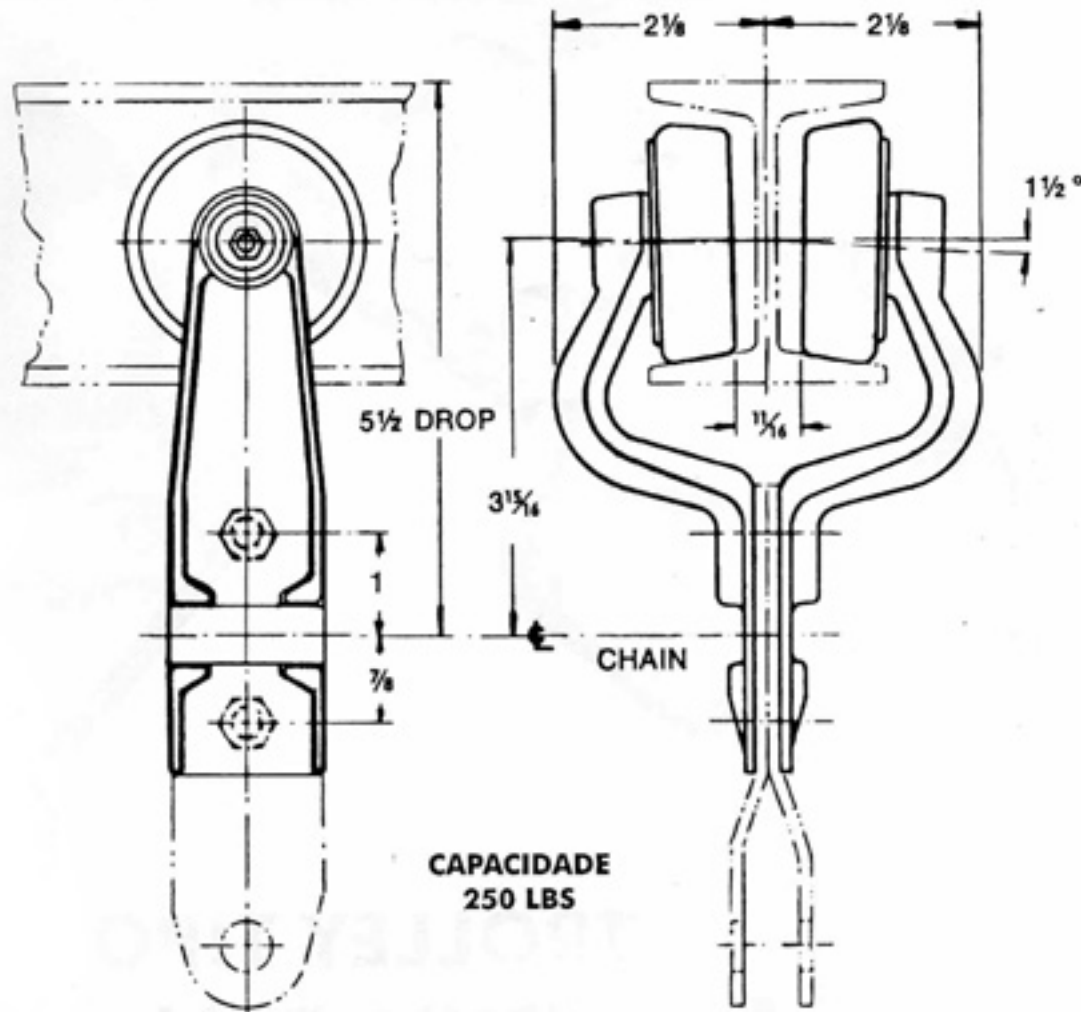
TROLLEY TIPO "FULL BALL COMPLEMENT"

O trolley tipo "F.B.C." foi especialmente desenvolvido para condições severas de carga, altas temperaturas, contaminações secas, ou contaminações líquidas.

Suas aplicações típicas incluem estufas de cura, máquinas lavadoras de peças, instalações de pré-tratamento e fosfatizações, sistema de pintura e fundições.

As principais vantagens do trolley tipo F.B.C. é que não tendo retentor de esferas evita o acúmulo de resíduos provenientes de ambientes contaminantes e suporta as dilatações devido a exposição a temperaturas até 260°C.

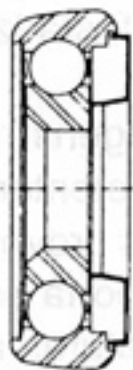
X348 TROLLEY FURO VERTICAL 5 1/2" DROP



CSC PART NO.	BEARING STYLE	BRACKET DROP	HOLE ALIGNMENT	FRONT SEAL	REAR SEAL	LUBE	INTERCHANGE
3211A	Retainer	5 1/2"	Vertical	Splash Proof	Welch Plug	YES	WEBB 3361AT FROST 5240034 SAGINAW 3T100
3211B	Retainer	5 1/2"	Vertical	Single Shield	NONE	NO	OPTIONAL
3211C	Retainer	5 1/2"	Vertical	NONE	Welsh Plug	NO	
3211D	Retainer	5 1/2"	Vertical	NONE	NONE	NO	
3211F	Retainer	5 1/2"	Vertical	Wiper Seal	Welsh Plug	YES	
3212A	Full Ball	5 1/2"	Vertical	Splash Proof	Welsh Plug	YES	WEBB 3361AT FULL BALL FROST 5440034 SAGINAW 3T110
3212B	Full Ball	5 1/2"	Vertical	Single Shield	NONE	NO	OPTIONAL
3212C	Full Ball	5 1/2"	Vertical	NONE	Welsh Plug	NO	
3212D	Full Ball	5 1/2"	Vertical	NONE	NONE	NO	
3212F	Full Ball	5 1/2"	Vertical	Wiper Seal	Welsh Plug	YES	



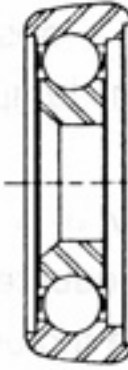
A



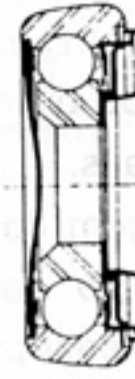
B



C



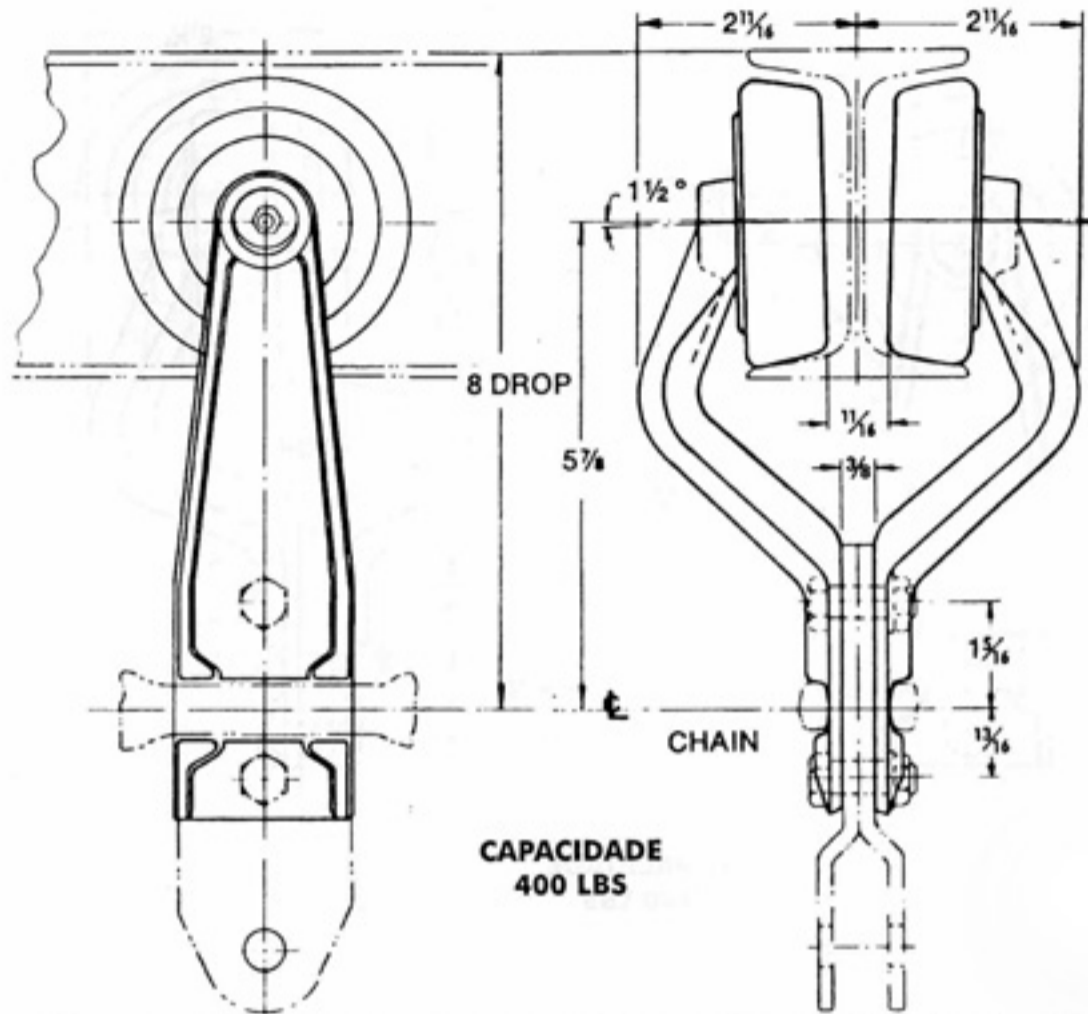
D



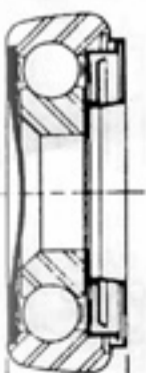
F

 *E FULL BALL
EXTRA GRIND

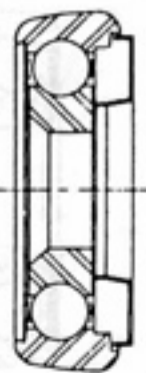
X458 TROLLEY FURO VERTICAL 8" DROP



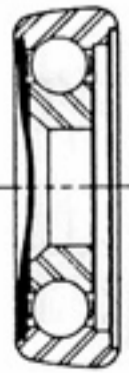
CSC PART NO.	BEARING STYLE	BRACKET DROP	HOLE ALIGNMENT	FRONT SEAL	REAR SEAL	LUBE	INTERCHANGE
4211A	Retainer	8"	Vertical	Splash Proof	Welch Plug	YES	WEBB 5434 FROST 7240070 SAGINAW 4T100
4211B	Retainer	8"	Vertical	Single Shield	NONE	NO	OPTIONAL
4211C	Retainer	8"	Vertical	NONE	Welsh Plug	NO	
4211D	Retainer	8"	Vertical	NONE	NONE	NO	
4211F	Retainer	8"	Vertical	Wiper Seal	Welsh Plug	YES	
4212A	Full Ball	8"	Vertical	Splash Proof	Welsh Plug	YES	
4212B	Full Ball	8"	Vertical	Single Shield	NONE	NO	OPTIONAL
4212C	Full Ball	8"	Vertical	NONE	Welsh Plug	NO	
4212D	Full Ball	8"	Vertical	NONE	NONE	NO	
4212F	Full Ball	8"	Vertical	Wiper Seal	Welsh Plug	YES	



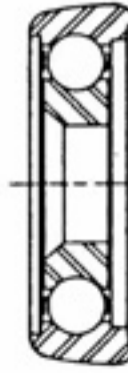
A



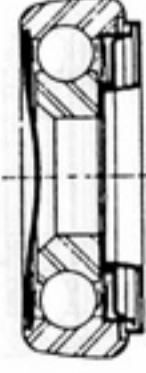
B



C



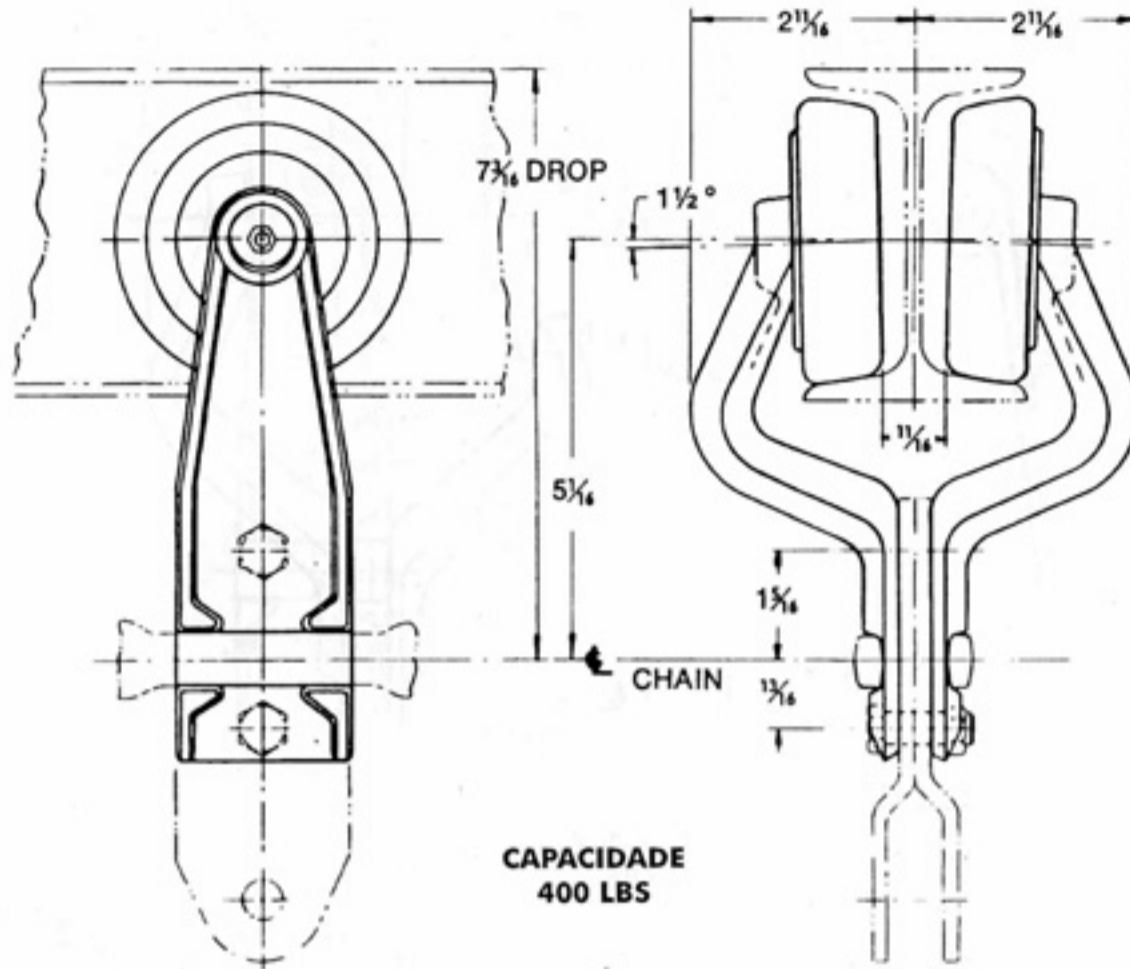
D



E

*E FULL BALL
EXTRA GRIND

X458 TROLLEY FURO VERTICAL 7³/₁₆" DROP



CSC PART NO.	BEARING STYLE	BRACKET DROP	HOLE ALIGNMENT	FRONT SEAL	REAR SEAL	LUBE	INTERCHANGE
4221A	Retainer	7 ³ / ₁₆ "	Vertical	Splash Proof	Welch Plug	YES	WEBB 3377-1 FROST 7240073 SAGINAW 4T200
4221B	Retainer	7 ³ / ₁₆ "	Vertical	Single Shield	NONE	NO	OPTIONAL
4221C	Retainer	7 ³ / ₁₆ "	Vertical	NONE	Welsh Plug	NO	
4221D	Retainer	7 ³ / ₁₆ "	Vertical	NONE	NONE	NO	
4221F	Retainer	7 ³ / ₁₆ "	Vertical	Wiper Seal	Welsh Plug	YES	
4222A	Full Ball	7 ³ / ₁₆ "	Vertical	Splash Proof	Welsh Plug	YES	WEBB 3377-1 FULL BALL FROST 7540073 SAGINAW 4T210
4222B	Full Ball	7 ³ / ₁₆ "	Vertical	Single Shield	NONE	NO	OPTIONAL
4222C	Full Ball	7 ³ / ₁₆ "	Vertical	NONE	Welsh Plug	NO	
4222D	Full Ball	7 ³ / ₁₆ "	Vertical	NONE	NONE	NO	
4222F	Full Ball	7 ³ / ₁₆ "	Vertical	Wiper Seal	Welsh Plug	YES	



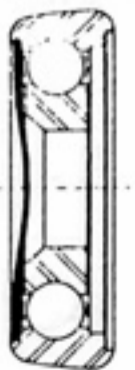
A



B



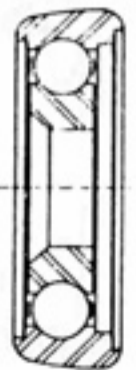
C



D



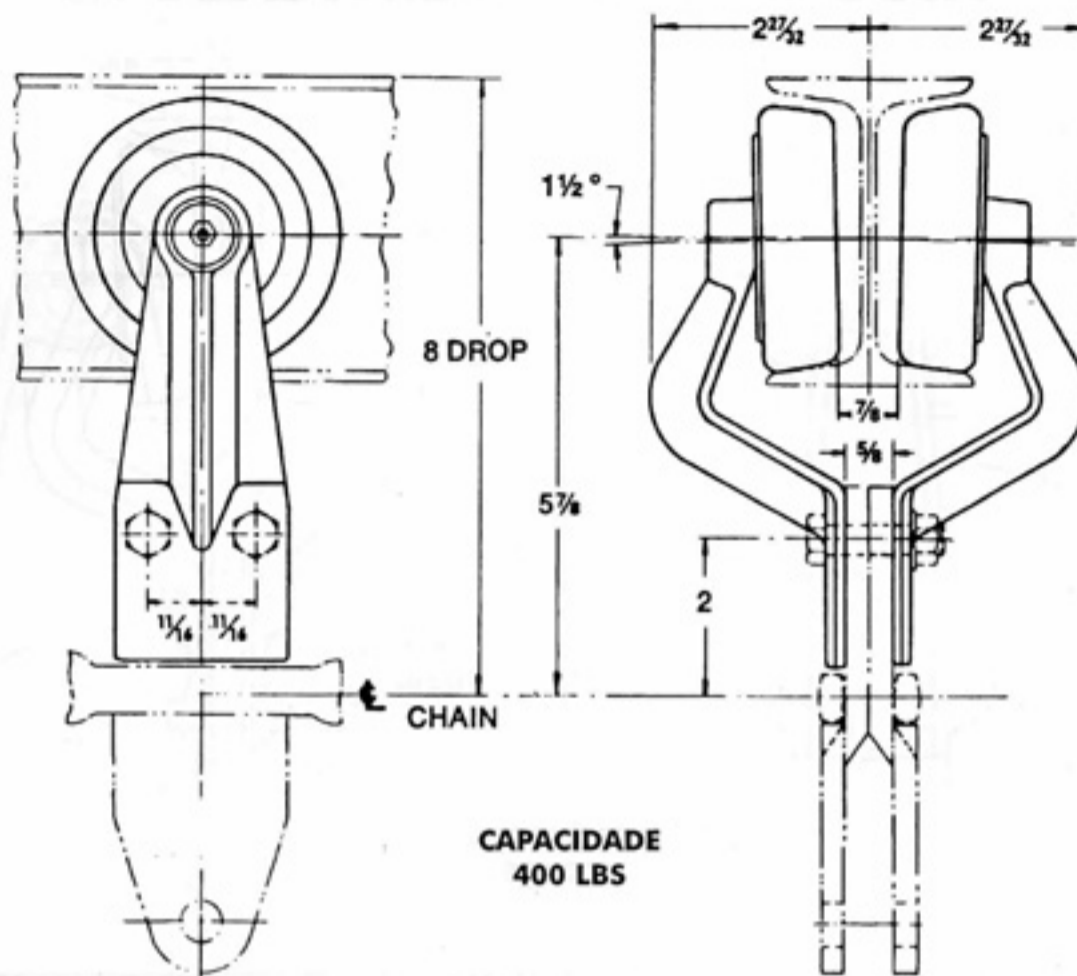
E



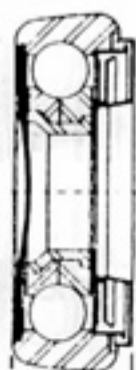
F

*E FULL BALL
EXTRA GRIND

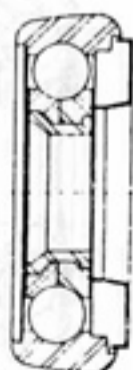
X458 TROLLEY FURO HORIZONTAL 8" DROP



CSC PART NO.	BEARING STYLE	BRACKET DROP	HOLE ALIGNMENT	FRONT SEAL	REAR SEAL	LUBE	INTERCHANGE
4231A	Retainer	8"	Horizontal	Splash Proof	Welch Plug	YES	WEBB 8293-1 FROST 7240079 SAGINAW 4T300
4231B	Retainer	8"	Horizontal	Single Shield	NONE	NO	OPTIONAL
4231C	Retainer	8"	Horizontal	NONE	Welsh Plug	NO	
4231D	Retainer	8"	Horizontal	NONE	NONE	NO	
4231F	Retainer	8"	Horizontal	Wiper Seal	Welsh Plug	YES	
4232A	Full Ball	8"	Horizontal	Splash Proof	Welsh Plug	YES	
4232B	Full Ball	8"	Horizontal	Single Shield	NONE	NO	OPTIONAL
4232C	Full Ball	8"	Horizontal	NONE	Welsh Plug	NO	
4232D	Full Ball	8"	Horizontal	NONE	NONE	NO	
4232F	Full Ball	8"	Horizontal	Wiper Seal	Welsh Plug	YES	



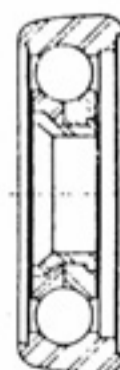
A



B



C



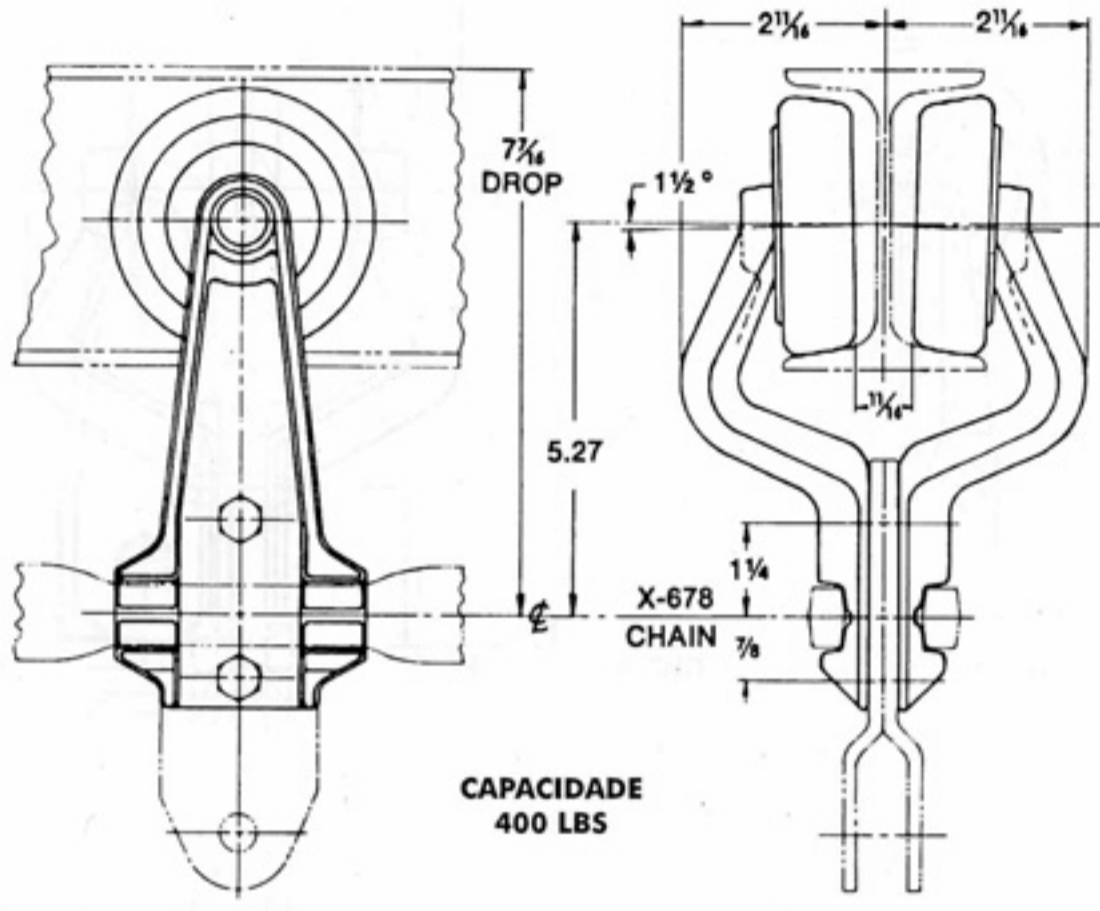
D



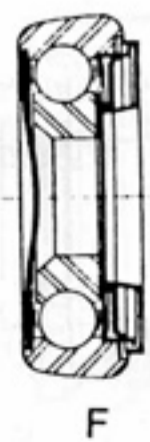
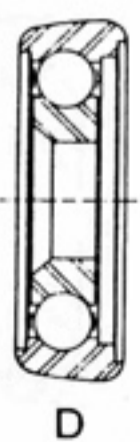
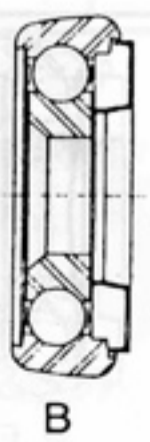
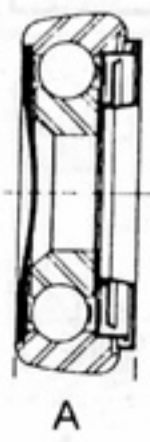
F

*E FULL BALL
EXTRA GRIND

4" over 6" TROLLEY FURO VERTICAL 7⁷/₁₆" DROP

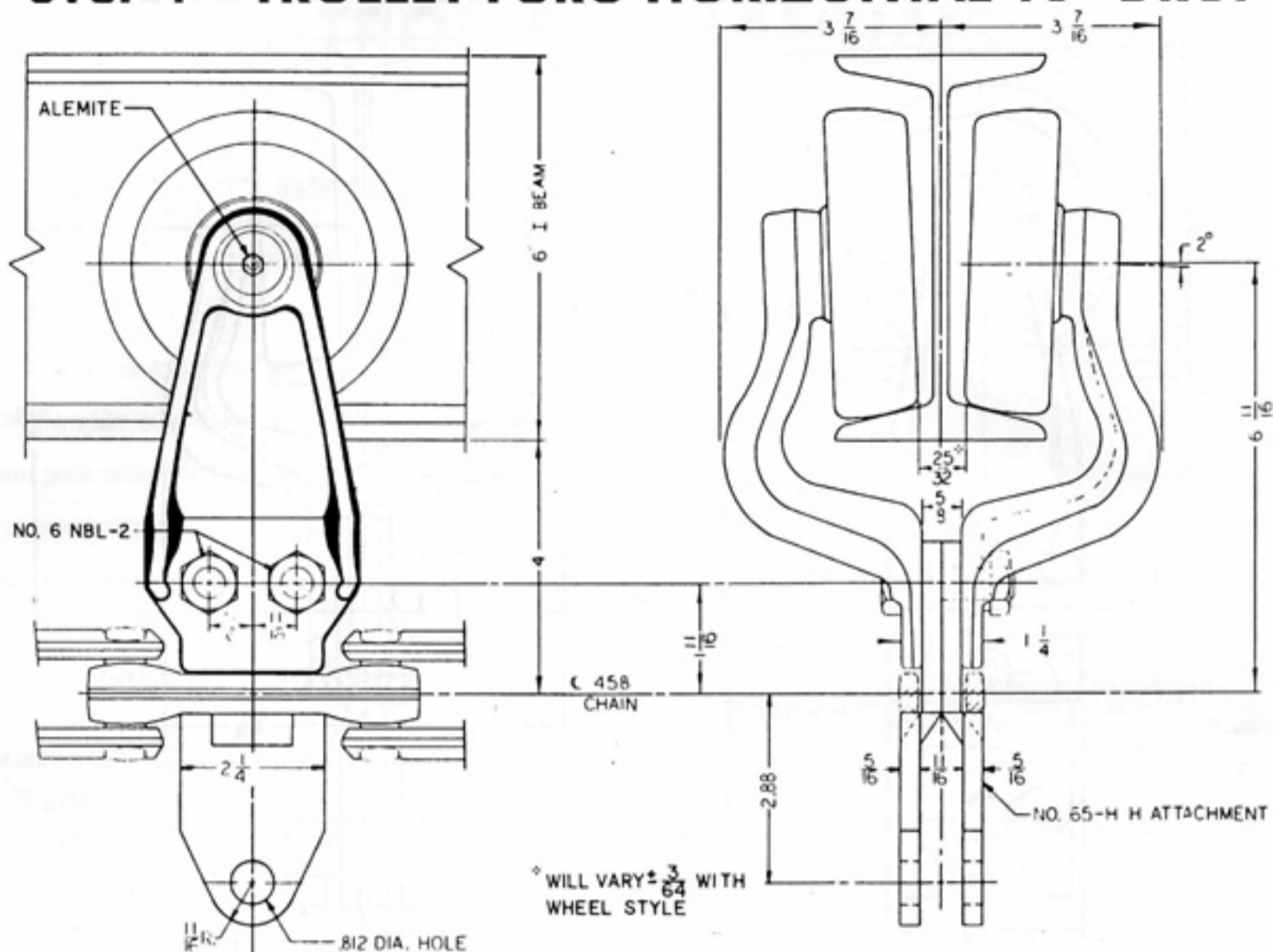


CSC PART NO.	BEARING STYLE	BRACKET DROP	HOLE ALIGNMENT	FRONT SEAL	REAR SEAL	LUBE	INTERCHANGE
4251A	Retainer	7 ⁷ / ₁₆ "	Vertical	Splash Proof	Welch Plug	YES	WEBB 8969-4 FROST 7240075 SAGINAW 4T600
4251B	Retainer	7 ⁷ / ₁₆ "	Vertical	Single Shield	NONE	NO	OPTIONAL
4251C	Retainer	7 ⁷ / ₁₆ "	Vertical	NONE	Welsh Plug	NO	
4251D	Retainer	7 ⁷ / ₁₆ "	Vertical	NONE	NONE	NO	
4251F	Retainer	7 ⁷ / ₁₆ "	Vertical	Wiper Seal	Welsh Plug	YES	
4252A	Full Ball	7 ⁷ / ₁₆ "	Vertical	Splash Proof	Welsh Plug	YES	WEBB 8969-4 FULL BALL FROST 7540075 SAGINAW 4T610
4252B	Full Ball	7 ⁷ / ₁₆ "	Vertical	Single Shield	NONE	NO	OPTIONAL
4252C	Full Ball	7 ⁷ / ₁₆ "	Vertical	NONE	Welsh Plug	NO	
4252D	Full Ball	7 ⁷ / ₁₆ "	Vertical	NONE	NONE	NO	
4252F	Full Ball	7 ⁷ / ₁₆ "	Vertical	Wiper Seal	Welsh Plug	YES	

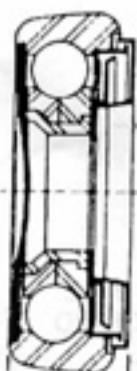


*E FULL BALL
EXTRA GRIND

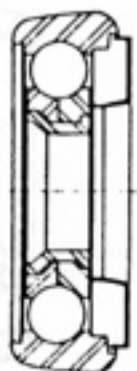
6" over 4" TROLLEY FURO HORIZONTAL 10" DROP



CSC PART NO.	BEARING STYLE	BRACKET DROP	HOLE ALIGNMENT	FRONT SEAL	REAR SEAL	LUBE	INTERCHANGE
6251A	Retainer	10"	Horizontal	Splash Proof	Welch Plug	YES	WEBB 7584-1 FROST 9010064 SAGINAW 6T400
6251B	Retainer	10"	Horizontal	Single Shield	NONE	NO	OPTIONAL
6251C	Retainer	10"	Horizontal	NONE	Welsh Plug	NO	
6251D	Retainer	10"	Horizontal	NONE	NONE	NO	
6251F	Retainer	10"	Horizontal	Wiper Seal	Welsh Plug	YES	
6252A	Full Ball	10"	Horizontal	Splash Proof	Welsh Plug	YES	WEBB 7584-1 FULL BALL FROST 9480064 SAGINAW 6T410
6252B	Full Ball	10"	Horizontal	Single Shield	NONE	NO	OPTIONAL
6252C	Full Ball	10"	Horizontal	NONE	Welsh Plug	NO	
6252D	Full Ball	10"	Horizontal	NONE	NONE	NO	
6252F	Full Ball	10"	Horizontal	Wiper Seal	Welsh Plug	YES	



A



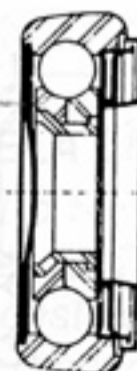
B



C



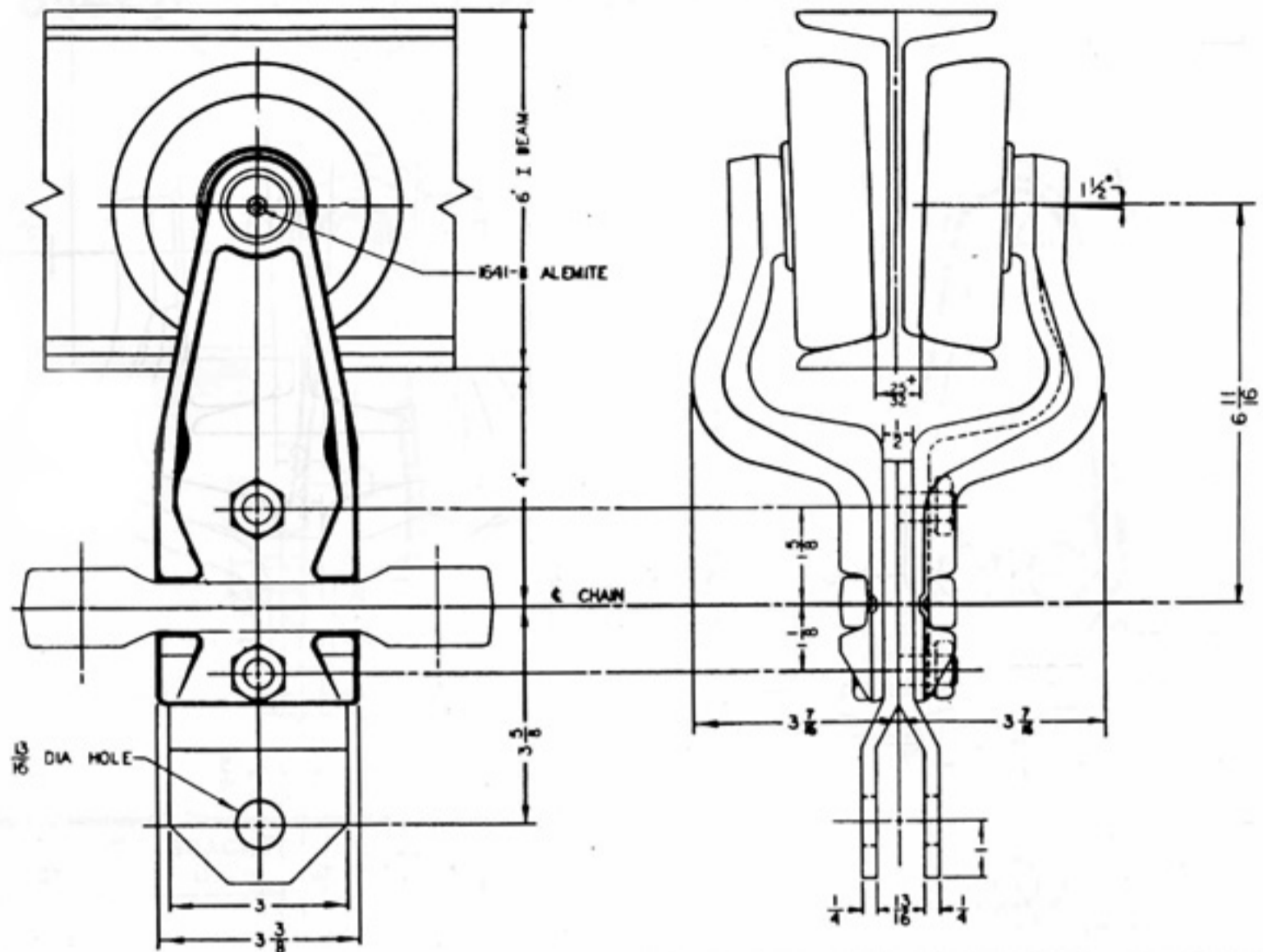
D



E

 *E FULL BALL
EXTRA GRIND

X678 TROLLEY FURO VERTICAL 10" DROP



CSC PART NO.	BEARING STYLE	BRACKET DROP	HOLE ALIGNMENT	FRONT SEAL	REAR SEAL	LUBE	INTERCHANGE
6211A	Retainer	10"	Vertical	Splash Proof	Welch Plug	YES	WEBB 7662-1 FROST 9010060 SAGINAW 6T600
6211B	Retainer	10"	Vertical	Single Shield	NONE	NO	OPTIONAL
6211C	Retainer	10"	Vertical	NONE	Welsh Plug	NO	
6211D	Retainer	10"	Vertical	NONE	NONE	NO	
6211F	Retainer	10"	Vertical	Wiper Seal	Welsh Plug	YES	
6212A	Full Ball	10"	Vertical	Splash Proof	Welsh Plug	YES	WEBB 7662-1 FULL BALL FROST 9480060 SAGINAW 6T610
6212B	Full Ball	10"	Vertical	Single Shield	NONE	NO	OPTIONAL
6212C	Full Ball	10"	Vertical	NONE	Welsh Plug	NO	
6212D	Full Ball	10"	Vertical	NONE	NONE	NO	
6212F	Full Ball	10"	Vertical	Wiper Seal	Welsh Plug	YES	



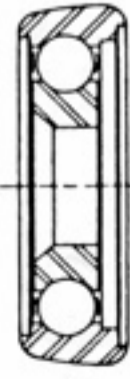
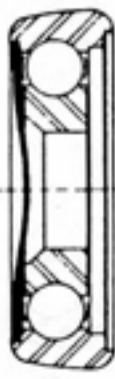
A



B



C



D



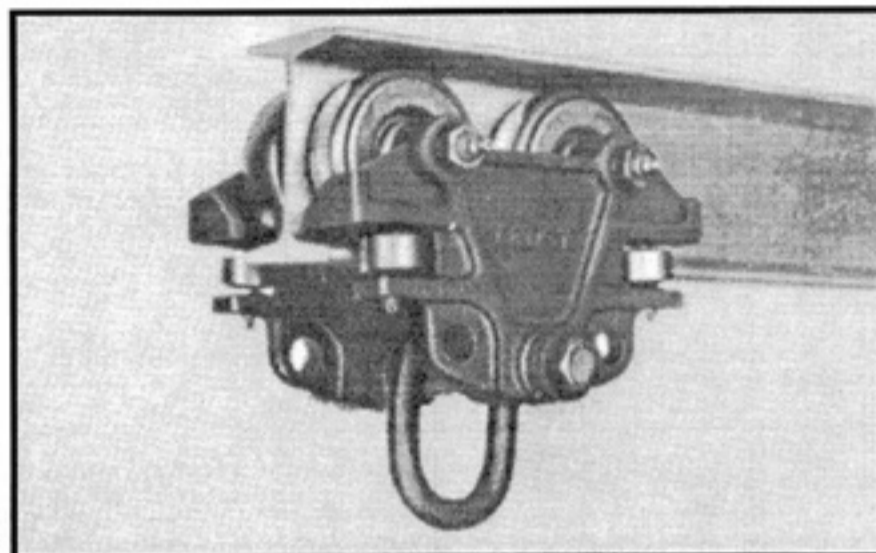
F

 *E FULL BALL
EXTRA GRIND

TROLLEYS MANUAIS

Trolleys manuais para monovias aéreas

- Adaptáveis para diferentes bitolas de perfis "I".
- Construção robusta.
- Roldanas aparafusadas para fácil e rápida substituição.
- Rodas de precisão com baixo atrito para fácil movimentação.
- Blindagem para proteção em ambientes contaminados.
- Bicos para relubrificação de rodas e roletes guia.
- Para uso em monovias retas e curvas com raios mínimo de 600 mm.



Guia para montagem

Monte as arruelas 5/8" (2) no parafuso (6) conforme o perfil do trilho.

0 interna e 16 externa para I 4".

4 interna e 12 externa para I 5".

8 interna e 8 externa para I 6".

16 interna e 0 externa para I 8".

PEÇA Nº

CAPACIDADE

0605400

1/2 Ton

0600400

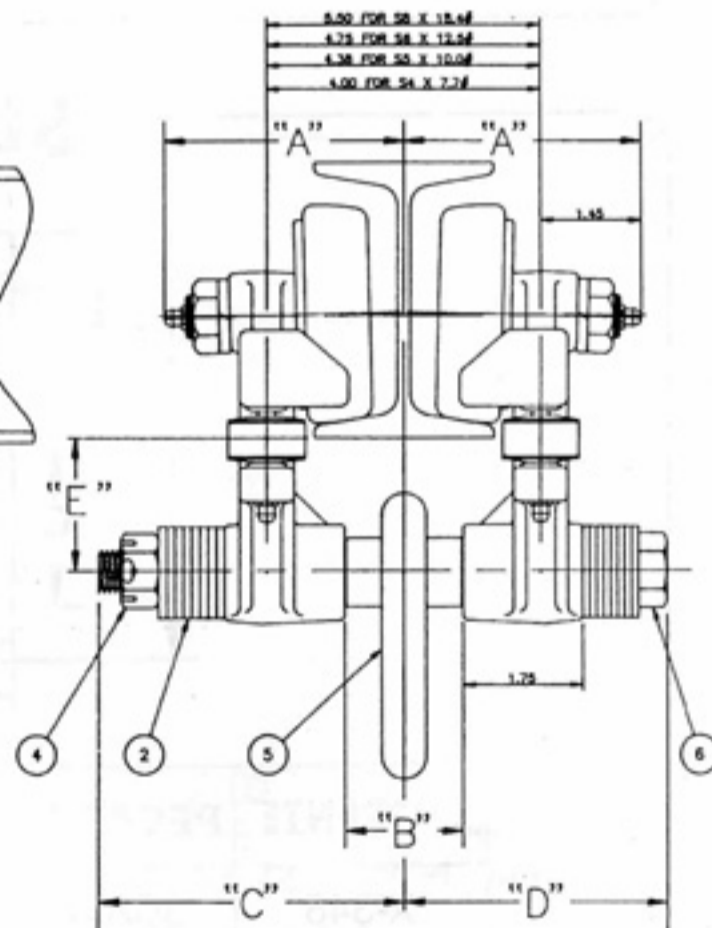
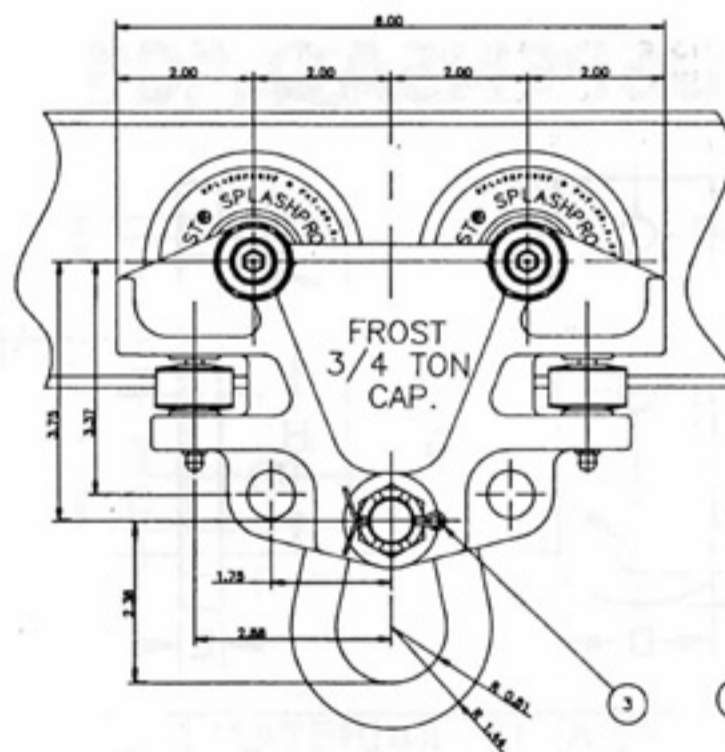
3/4 Ton

0601400

1 Ton

Aplicações:

- Transformadores de solda.
- Ferramentas
- Talhas.
- Indústria metalúrgica.
- Automotiva.
- Fundições.
- Fabricação.



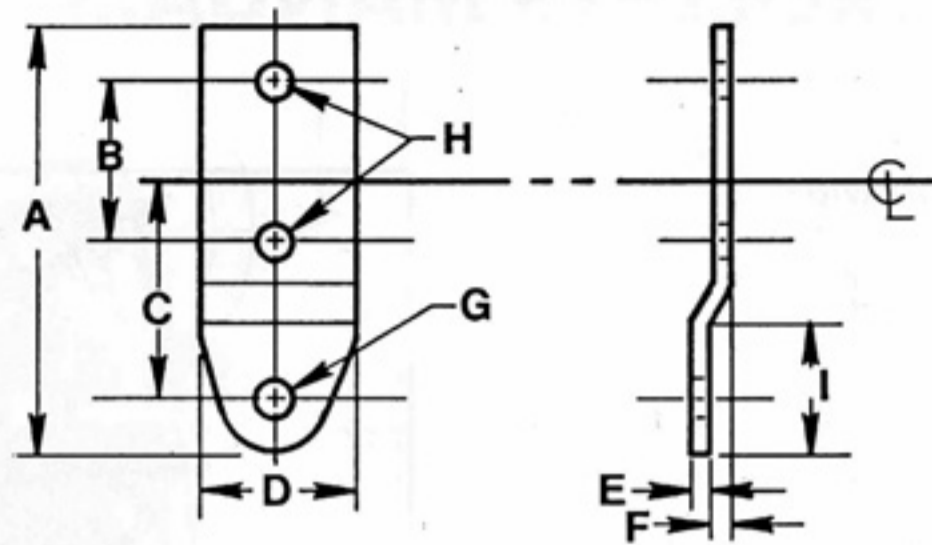
ITEM

QUANTIDADE

ARRUELA LISA

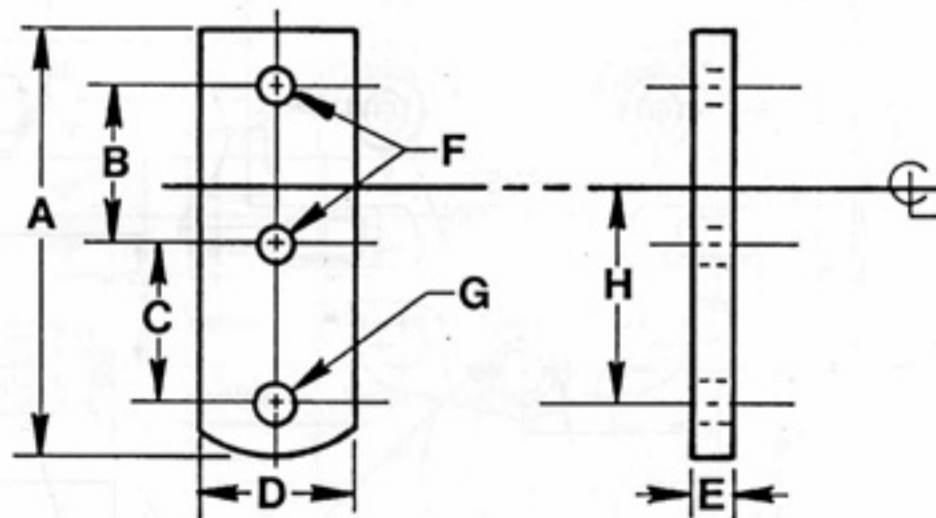
2	16	Diâmetro 5/8"
3	1	Cupilha 5/32" x 1 1/2"
4	1	Porca castelo diâmetro 5/8"
5	1	Argola de carga
6	1	Parafuso

SUSPENSÃO "H"



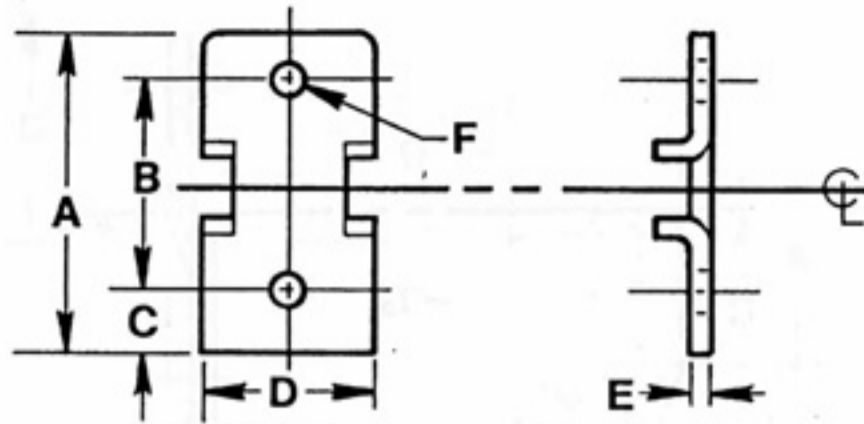
CORRENTE	PEÇAS N°	A	B	C	D	E	F	G	H	I
X-348	3HAV01	5.25	1.88	3.12	1.44	.125	.285	.531	.344	1.63
X-348	3HAV02	5.25	1.88	3.44	1.44	.125	.285	.281	.344	1.63
X-458	4HAV01	5.63	2.13	2.87	2.00	.187	.344	.531	.406	1.75
X-678	6HAV01	6.99	2.75	3.63	3.00	.250	.406	.81	.531	2.00

SUSPENSÃO "C"



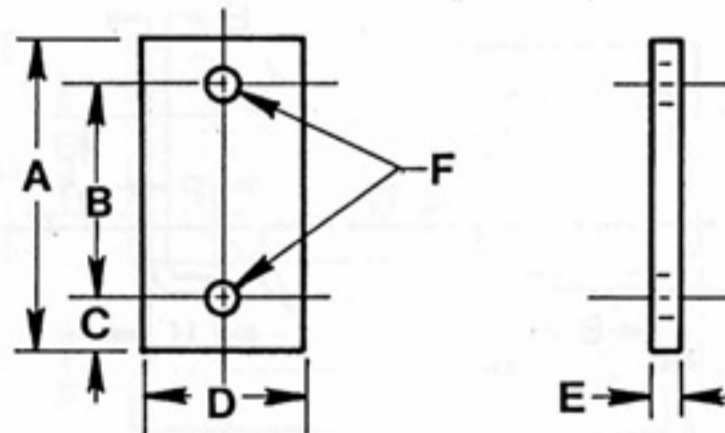
CORRENTE	PEÇAS N°	A	B	C	D	E	F	G	H
X-348	3CAV01	5.26	1.88	2.25	1.44	.25	.344	.531	3.12
X-348	3CAV02	4.38	1.88	1.38	1.44	.25	.344	.531	2.25
X-458	4CAV01	5.62	2.12	2.06	1.75	.37	.406	.562	2.88

ESPAÇADOR "F"



CORRENTE	PEÇAS N°	MATERIAL	A	B	C	D	E	F
X-348	3FAV01	STEEL	2.75	1.88	.5	1.50	.125	.344
X-458	4FAV01	STEEL	3.0	2.12	.437	1.80	.187	.437

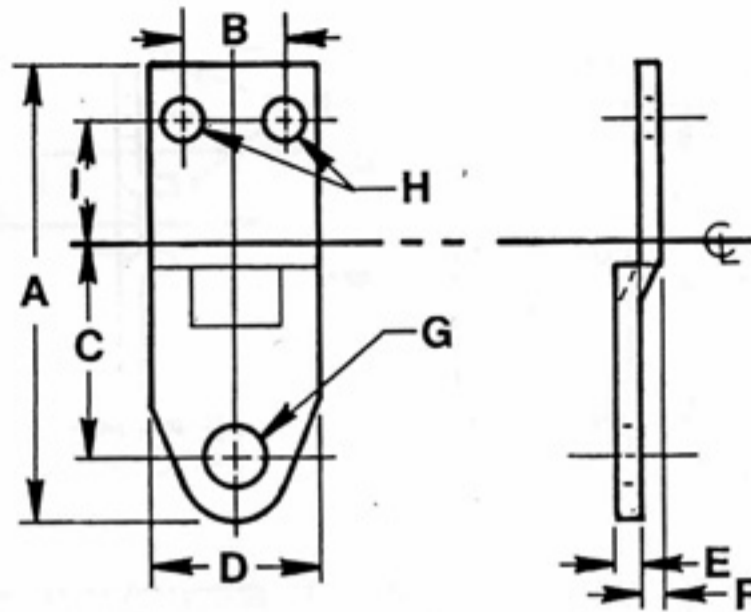
ESPAÇADOR "I"



CORRENTE	PEÇAS N°	MATERIAL	A	B	C	D	E	F
X-348	3IAV01	STEEL	2.75	1.88	.50	1.44	.25	.344
X-458	4IAV01	STEEL	3.0	2.12	.437	1.75	.37	.437
X-678	6IAV01	STEEL	4.12	2.75	.75	3.0	.50	.531

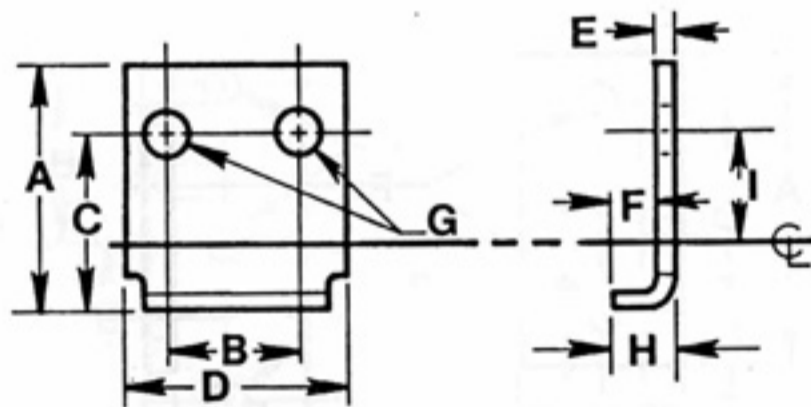
MACLEU

SUSPENSÃO "H"



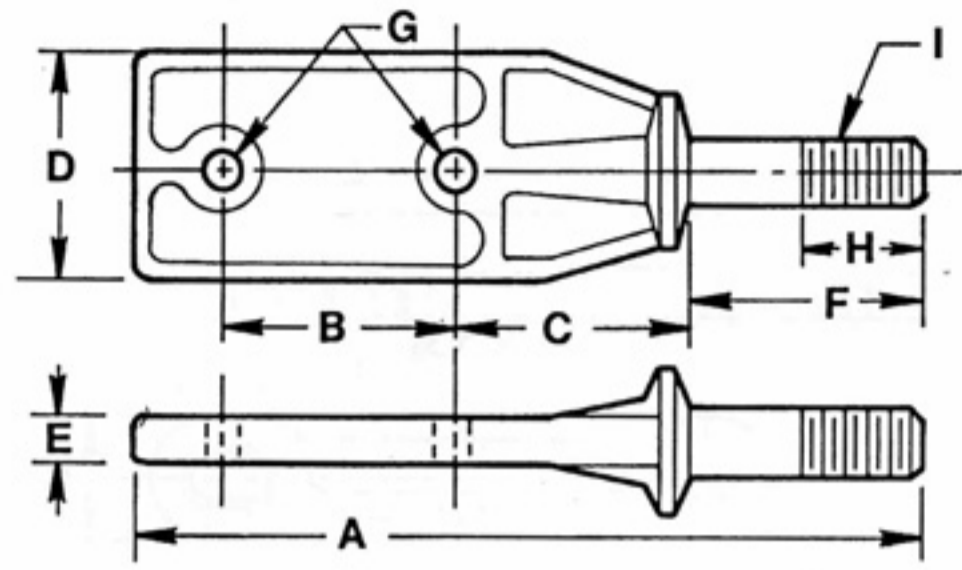
CORRENTE	PEÇAS N°.	A	B	C	D	E	F	G	H	I
X-458	4HAH01	6.13	1.37	3.00	2.25	.312	.344	.562	.406	2.00

ESPAÇADOR "I"



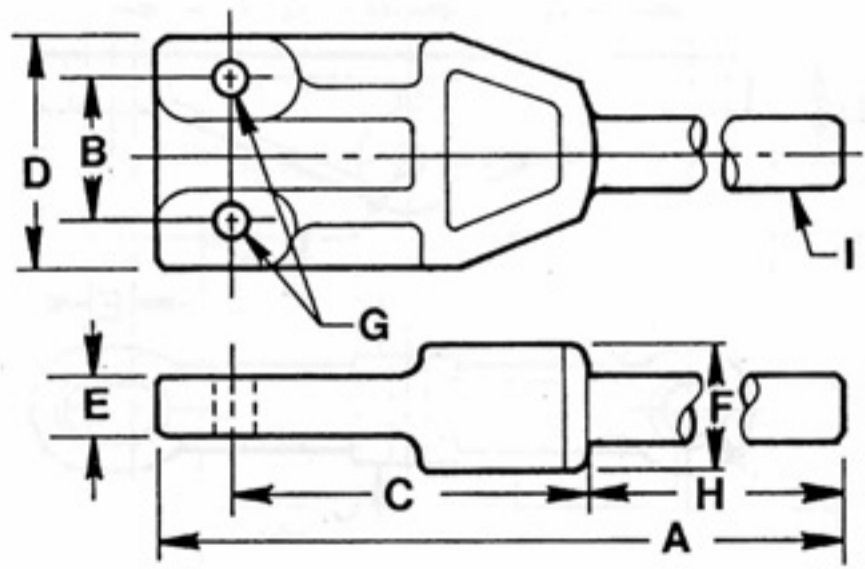
CORRENTE	PEÇAS N°.	A	B	C	D	E	F	G	H	I
X-458	4IAH01	3.34	1.37	2.59	2.25	.312	.25	.406	.625	2.03
X-678	6IAH01	3.62	2.00	2.67	3.27	.25	.625	.52	.87	1.94

SUSPENSÃO "B"



CORRENTE	PEÇAS N°.	A	B	C	D	E	F	G	H	I
X-348	3BAV01	5.75	1.88	1.56	1.50	.25	1.81	.328	.875	1/2-13
X-458	4BAV01	6.88	2.12	2.00	2.00	.375	2.12	.406	1.12	5/8-11
X-678	6BAV01	8.78	2.75	2.00	3.00	.500	3.02	.560	1.38	7/8-9

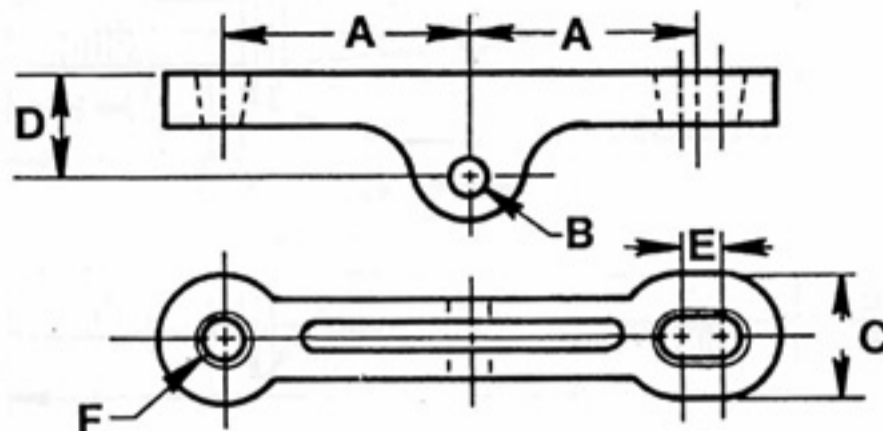
SUSPENSÃO "B"



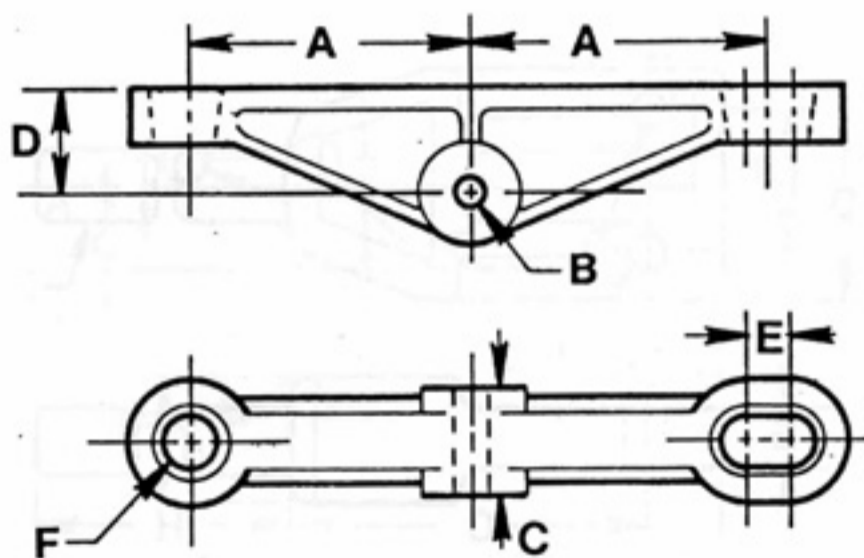
CORRENTE	PEÇAS N°.	A	B	C	D	E	F	G	H	I
X-678	6BAH01	*	*	5.36	3.58	*	1.86	.53	*	*

*Per Customer Specification

BARRA DE CARGA

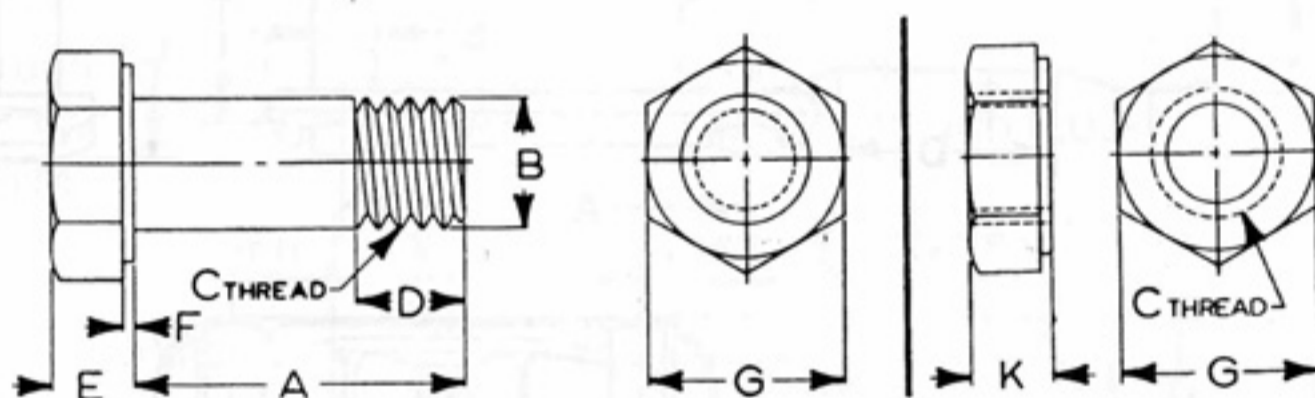


CORRENTE	PEÇAS N°.	A	B	C	D	E	F
X-348	3LBA01	3	9/16	2-1/2	1-5/8	47/64	15/16
X-458	4LBA01	4	11/16	3/4	1 3/4	3/4	1-1/16



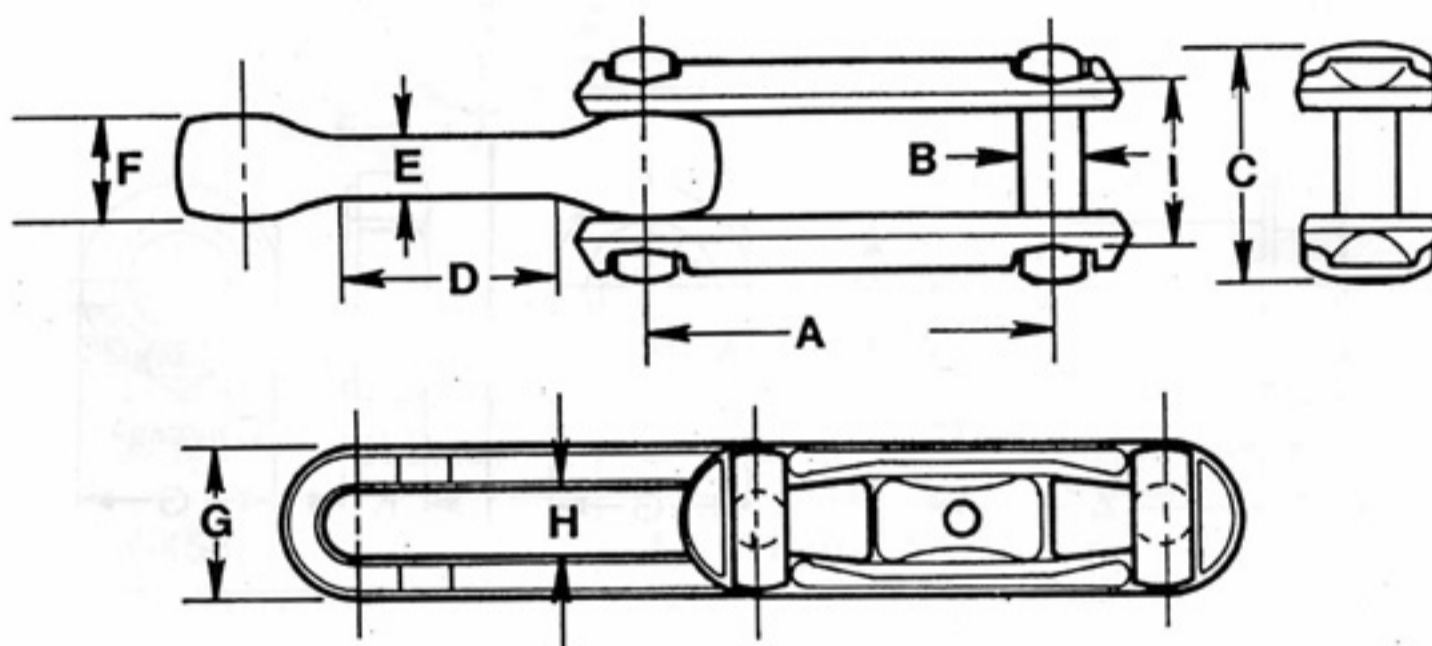
CORRENTE	PEÇAS N°	A	B	C	D	E	F
X-678	6LBA01	6	13/16	2-3/8	2	13/16	1-5/16

PARAFUSOS E PORCAS PARA TROLLEYS



PEÇAS N°	DIMENSÕES EM POLEGADAS							Trolleys
	A	B	C	D	E	G	K	
CSC-3000	3/4	5/16	18-NC	5/16	7/32	1/2	3/16	Vertical 5-1/2" Drop
CSC-4000	15/16	3/8	16-NC	3/8	1/4	9/16	7/32	Vertical 8" / 7-3/16" / 7-7/16" Drop
CSC-4001	1-5/8	3/8	16-NC	11/16	1/4	9/16	21/64	Horizontal 8" Drop
CSC-6000	1-1/2	1/2	13-NC	9/16	11/32	3/4	5/16	Vertical 10" Drop
CSC-6001	1-3/4	1/2	13-NC	1-1/4	11/32	3/4	7/16	Horizontal 10" Drop & 6 over 4
CSC-6002	2-1/2	1/2	13-NC	1-1/4	11/32	3/4	7/16	Horizontal 10-9/16 Drop
CSC-6012	2-1/4	1/2	13-NC	1-1/4	11/32	3/4	7/16	Horizontal 10-1/2" Drop

CORRENTES FORJADAS



CORRENTE	PÊSO	CARGA RUPTURA	A	B	C	D	E	F	G	H	I
X-348	2.1#/FT	24,000 LBS	3	.50	1.84	1.63	.50	.75	1.09	.562	1.28
X-458	3.1#/FT	48,000 LBS	4	.625	2.25	2.25	.625	1.0	1.41	.687	1.63
X-678	6.5#/FT	85,000 LBS	6	.875	3.13	3.38	.812	1.28	2.0	.969	2.25
X-698	11.4#/FT	130,000 LBS	6	1.12	3.75	3.5	1.0	1.55	2.75	1.25	2.70

CORRENTES FORJADAS

Correntes forjadas tipo "X"

As correntes forjadas tipo "X" são limpas e livres de sujeira, ferrugem e rebarba conforme ASTM A521.

Os elos centrais tem uma lisa superfície de contato com os pinos. A superfície de contato do elo central com o pino deve ser equivalente a 75% de sua área total.

Todos os componentes recebem proteção contra corrosão antes do embarque.

Todas as correntes são novas e forjadas a partir de aço de alto carbono ou micro-liga. Aço alto carbono é o SAE-1046 modificado, Mn 0,08-1.10. Micro-liga conforme ASTM.

Corrente	X348	X458	X678	698
Material	Micro Alloy	Micro Alloy	Micro Alloy	Carbon

Cargas ruptura:

Corrente	X348	X458	X678	698
Lbs.	40.000	68.000	125.000	160.000
Kg.	18.180	30.900	56.818	72.727

Os componentes são tratados termicamente para dureza Brinell (esfera 10mm@ 3.000Kg).

Corrente	X348	X458	X678	698
Pin	375-429	375-429	375-429	341-415
C.L.	375-429	375-429	375-429	331-388
S.L.	375-429	375-429	375-429	311-388

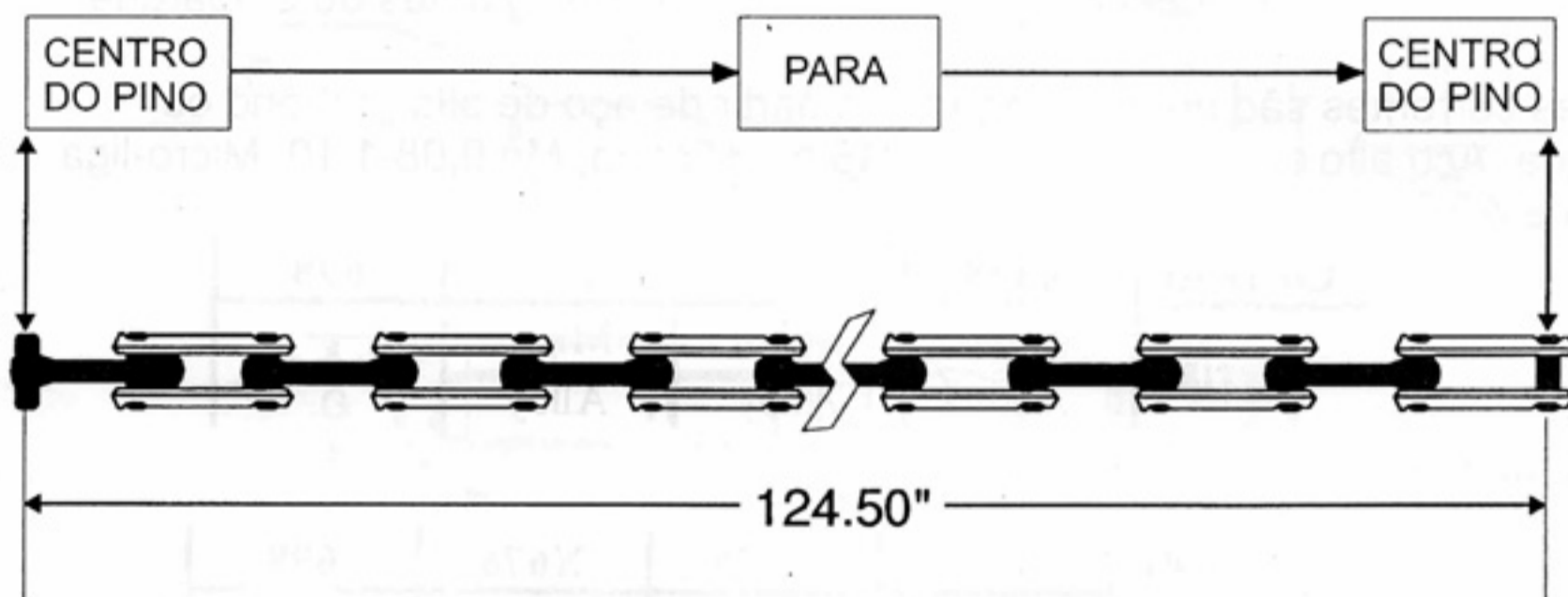
O comprimento total de uma corrente nova com segmentos nominais de 10'-0 (3.048mm) é de 121" (3.073mm) +ou- 1/2".

Uma corrente é considerada gasta quando um segmento nominal de 10'-0 alcança um total de 125" (3.175mm).

As dimensões são conforme ANSI B29.22M-1980.

* Todas correntes podem ser testadas pré-tracionadas a uma carga correspondente a 33% da carga de ruptura.

GUIA PARA MEDIÇÃO E SUBSTITUIÇÃO DA CORRENTE



A substituição da corrente é recomendada quando a medida real de um trecho de 10'-0 de comprimento nominal for igual ou superior a 124,5"

Medição de trecho de comprimento nominal de 10'-0.

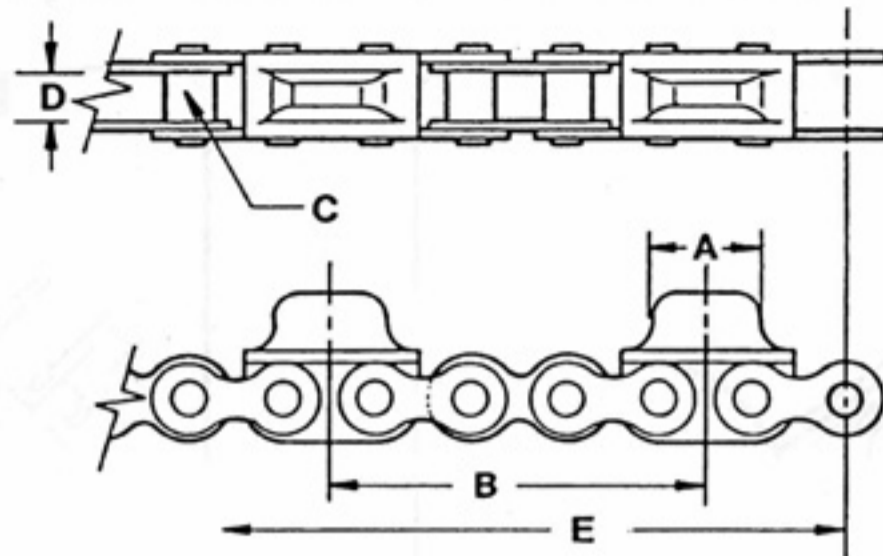
X-348 - Centro do primeiro pino ao centro do 41º pino

X-458 - Centro do primeiro pino ao centro do 31º pino

X-678 - Centro do primeiro pino ao centro do 21º pino

MACLEU

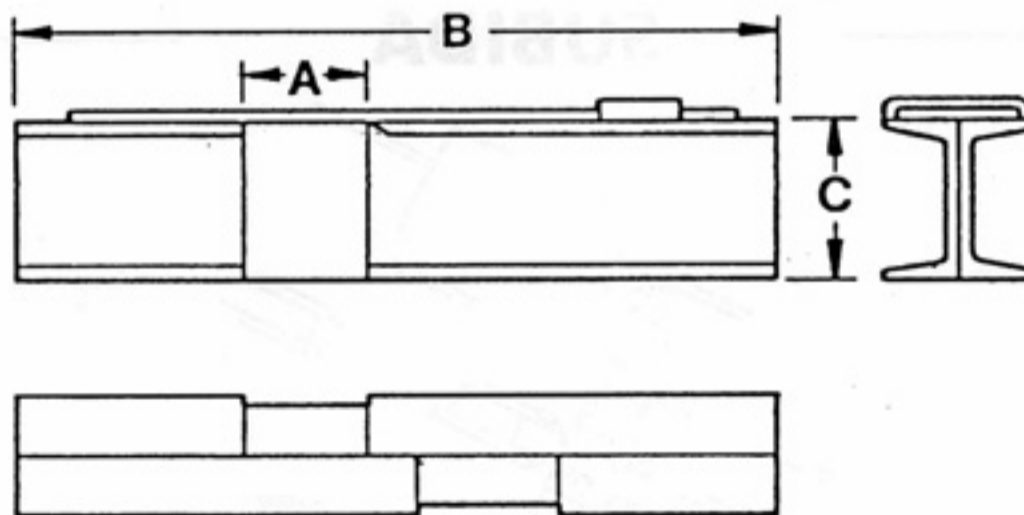
CORRENTE CATERPILLAR



CORRENTE	PEÇAS N°	A	B	C	D	E
348	3CCA01	1-13/16	6" 0R 12"	1.125	1.25	10'
458	4CCA01	2-1/2	8"	1.125	1.25	10'
678	6CCA01	3-3/4	12"	1.125	1.25	10'

WITH OR W/O OUTBOARD ROLLERS

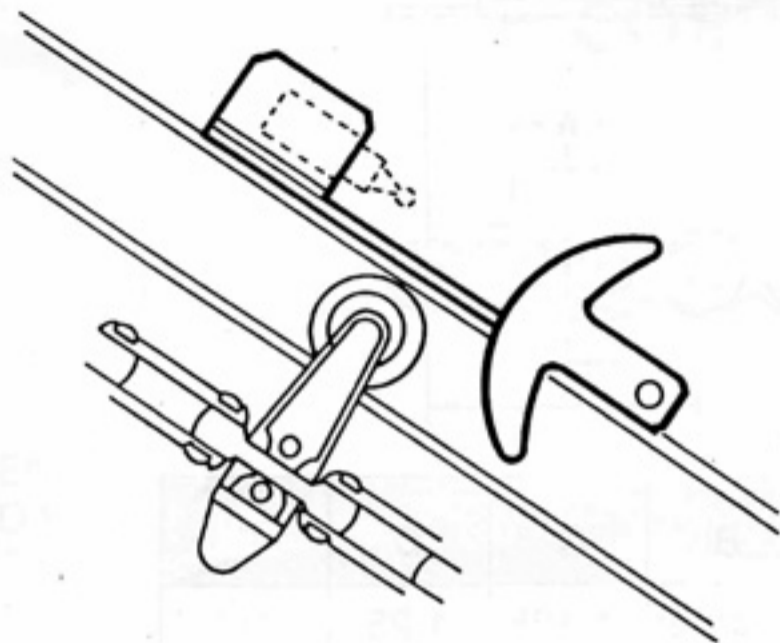
JUNTA DE EXPANSÃO



CORRENTE	PEÇAS N°	CURSO	FECHADO	C
348	3EJA01	8 IN.	2 FT. 2 IN.	3" [
458	4EJA01	8 IN.	2 FT. 2 IN.	4" [
678	6EJA01	8 IN.	2 FT. 2 IN.	6" [

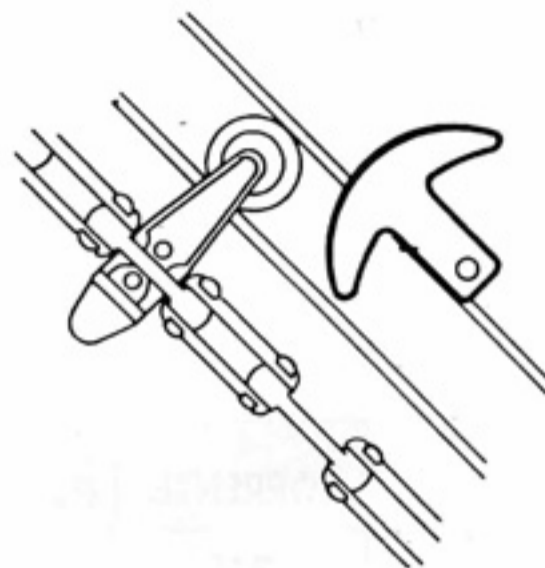
TRAVAS DE SEGURANÇA

DESCIDA



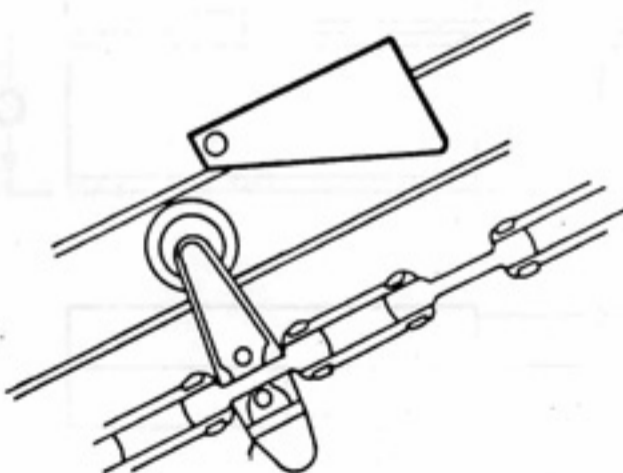
TRILHO I	PEÇA N°	DISC.
3"	3DSA01	LIMIT EXTRA
4"	4DSA01	LIMIT EXTRA
6"	6DSA01	LIMIT EXTRA

DESCIDA



TRILHO I	PEÇA N°
3"	3DSA02
4"	4DSA02
6"	6DSA02

SUBIDA



TRILHO I	PEÇA N°
3"	3USA01
4"	4USA01
6"	6USA01